

Regis College is comprised of two different buildings (the historic mansion of William M. Christie and Fontbonne Hall), connected together by a modern-style atrium. The historic mansion is a beautiful example of late Victorian style architecture, set prominently amongst other houses of that era along Queen's Park Crescent in Toronto.

The mansion's exterior features a porte-cochère and crow-stepped parapet gables. The interior is dominated by the grand spiral staircase (reflected in the new Atrium entrance on Wellesley Street West) that runs from the basement to the third floor, and is capped with a magnificent oculus illuminating through the heart of the mansion.

Function Room	Dimensions		Layout and Capacities			Reception Style	
	Room dimensions	Area of Room	Theatre	Classroom (18" x 60")	Banquet (54" round table; 6 people/table)	Banquet (60" round table; 8 people/table)	Reception Style
Classroom A	25.3 ft x 18 ft	455 ft ²	36	24	24	32	50
Classroom B	19.4 ft x 18.8 ft	365 ft ²	34	20	24	32	40
Classroom C	39.8 ft x 20.4 ft	812 ft ²	70	42	54	64	90
Goupil Foyer	55.1 ft x 13.5 ft	744 ft ²	n/a	n/a	n/a	n/a	82
Solarium	20 ft x 20.8 ft	416 ft ²	n/a	n/a	24	32	46
Central Lounge	40.4 ft x 18 ft	727 ft ²	n/a	n/a	30	40	80
Atrium	54.1 ft x 23 ft	1244 ft ²	n/a	n/a	36	48	90
Classroom D	16.8 ft x 16.4 ft	276 ft ²	20	10	18	24	30
Office Room	14.1 ft x 10.6 ft	149 ft ²	n/a	n/a	n/a	n/a	n/a
Main Chapel	64.7 ft x 41.8 ft	2704 ft ²	200	n/a	n/a	n/a	n/a
Servery/Kitchen	13.5 ft x 6.6 ft	89 ft ²	n/a	n/a	n/a	n/a	n/a

REGIS COLLEGE

*The Jesuit School of Theology
at the University of Toronto*



**100 Wellesley Street West
Toronto, ON, M5S 2Z5
www.regiscollege.ca/rental
416-922-5474 ext. 231**

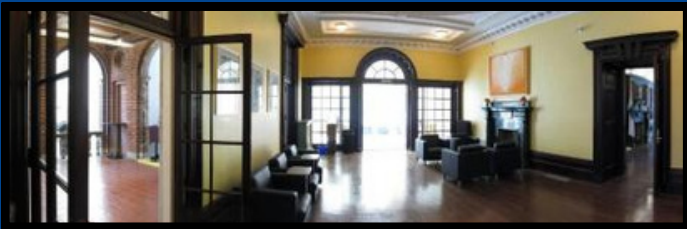
The main floor function rooms of the historic house feature the original grand hallway, library/study, parlor, ballroom, solarium, and dining room.

These rooms are all available for booking for your meetings, special occasions, and events.



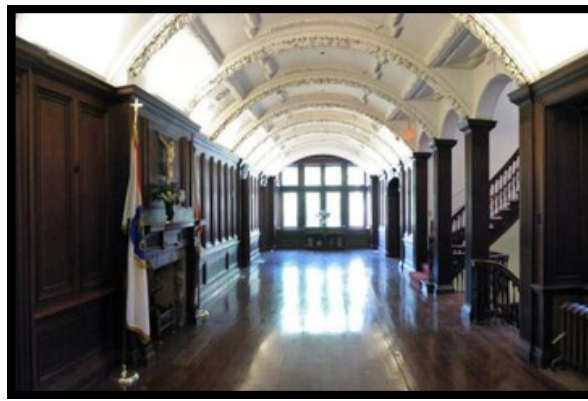
SOLARIUM

Originally the conservatory, the solarium features skylights, large vaulted windows, marble flooring, and double glass doors that lead into the former dining room, now the Central Lounge.



CENTRAL LOUNGE

Originally the main dining room of the historic house, the central lounge has an elaborate cameo ceiling, oak floors, and a marble fireplace. All these elements bring warmth and timelessness to this inviting space.



GOUPIL FOYER

A grand hall with a majestic barrel vaulted ceiling, oak paneling and flooring, and a formal fireplace.

CLASSROOM A

Originally the library/study, with built in oak cabinets and paneling, a coffered ceiling, and a magnificent fireplace which anchors the room



CLASSROOM B

Originally the front parlor/sitting room with intricate cornicing, a charming fireplace and lovely views of Queen's Park Crescent. This room has a secondary door which leads to Classroom C.



CLASSROOM C

Originally the large ballroom of the mansion, it has floor to ceiling wainscoting, soaring heights to the ornate ceiling plasterwork, and an opulent fireplace. This room also features glass paneled oak doors leading to the gracious solarium and dining room.

