

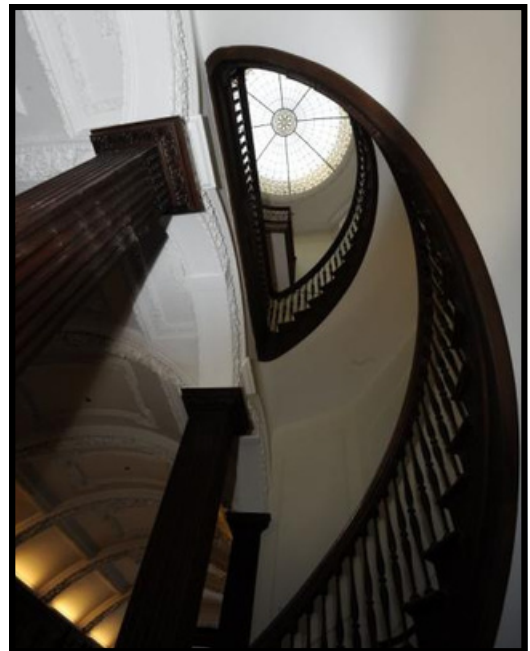
CHRISTIE MANSION



The Christie Mansion was the home of biscuit baker William M. Christie of Christie, Brown and Company. Reconstructed c. 1910 for son Robert J. Christie, the Christie Mansion is a beautiful example of late Victorian style set prominently amongst other houses of that era along Queen's Park Crescent in Toronto.

The mansion's exterior features a portecochere and crow-stepped parapet gables. The interior is dominated by the grand spiral staircase (reflected in the new Atrium entrance on Wellesley Street West) that runs from the basement to the third floor, and is capped with a magnificent oculus illuminating through the heart of the mansion.

The main floor function rooms features the original grand hallway, library / study, parlor, ballroom, solarium and dining room, all available for your meetings, special occasions and events.



CHRISTIE MANSION

The home of **Regis College**, the Jesuit College at the University of Toronto

100 Wellesley Street West
Toronto, Ontario M5S 2Z5

T: 416-922-5474 x231

W: <https://regiscollege.ca/donations/rental/>

CHRISTIE MANSION

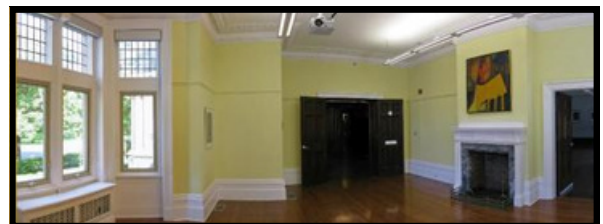
The Main Floor Function Rooms



Goupil Foyer is a grand hall with a majestic barrel vaulted ceiling, oak paneling and flooring and a formal fireplace.



Classroom A is the library / study with built in oak cabinets and paneling. The coffered ceiling and magnificent fireplace anchors the room.



Classroom B is the front parlor / sitting room with intricate cornicing, a charming fireplace and lovely views of Queen's Park Crescent. This room has a secondary door which leads to Classroom C.

CHRISTIE MANSION

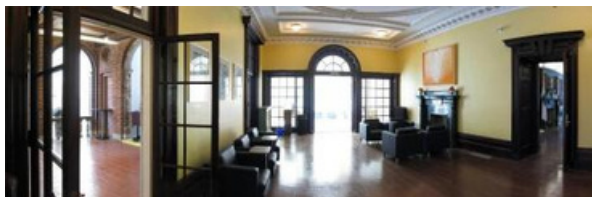
The Main Floor Function Rooms



Classroom C is the large ballroom with floor to ceiling wainscoting, soaring heights to the ornate ceiling plasterwork, and an opulent fireplace. This room also features glass paneled oak doors leading to the gracious solarium and dining room.



The **Solarium** is adorned with light with its skylights and large vaulted windows which features the marble flooring. The double glass doors leads into the former dining room now used as the Central Lounge area.



The **Central Lounge** has an elaborate cameo ceiling, oak floors and a marble fireplace, bringing warmth and timelessness to this inviting space.

CHRISTIE MANSION

Function Rooms	Dimensions		Layout & Capacities				
	Rm dimensions	Ft ²	Theatre	Classroom (18"x 60")	Banquet (54") 6ppl / round	Banquet (60") 8ppl / round	Reception Style
Classroom A (Library)	25.3 x 18	455	36	24	24	32	50
Classroom B (Parlor)	19.4 x 18.8	365	34	20	24	32	40
Classroom C (Ballroom)	39.8 x 20.4	812	70	42	54	64	90
Goupil Foyer (Great Hall)	55.1 x 13.5	744	n/a	n/a	n/a	n/a	82
Solarium (Conservatory)	20 x 20.8	416	n/a	n/a	24	32	46
Central Lounge (Dining Room)	40.4 x 18	727	n/a	n/a	30	40	80
Atrium (Fontbonne Hall)	54.1 x 23	1244	n/a	n/a	36	48	90
Classroom D (Fontbonne Hall)	16.8 x 16.4	276	20	10	18	24	30
Grp Study Rm (Fontbonne Hall)	14.1 x 10.6	149	n/a	n/a	n/a	n/a	n/a
Main Chapel (Fontbonne Hall)	64.7 x 41.8	2704	200	n/a	n/a	n/a	n/a
Oratory (Fontbonne Hall)	14.9 x 11.5	171	n/a	n/a	n/a	n/a	n/a
Catering Kitchen	13.5 x 6.6	89	n/a	n/a	n/a	n/a	n/a

AV Equipment Rental Rates

LCD Data projector
Blu-ray DVD player
Screen
VCR / DVD, TV, stand
Overhead projector
Whiteboard & markers

Service Rates

Onsite Staff - \$ / hr
Setup / Moving fee
Cleaning fee
Landmark fee

